

MASSACHUSETTS ENVIROTHON



Thursday, May 12, 2011

Great Brook Farm State Park, Carlisle, Mass.

Welcome!

We have come from communities all across Massachusetts to take part in the 2011 Massachusetts Envirothon.

What we share: A concern for our common wealth – the wealth we hold in common – our communities and the environmental systems they depend upon.

It's not enough to care about the environment. We need to understand as best we can how natural systems work and how we can manage our impact upon them. And it's not enough to understand. We need to take action.

The Envirothon competition aims to be a fun, challenging way to prepare for action (and if you visit today's roundtables, you are likely to meet teams who are already taking action).

We hope you will step up to the challenge. We hope you will also take time today to find joy in being outdoors (whatever the weather!) and to meet new people who share your interests and concerns.

Have a great day!

Will Snyder

Will Snyder, Chair
Massachusetts Envirothon Committee
UMass Extension

2011 Current Issue

Wetland Protection



Great Brook Farm State Park

This Year's Registered Teams

Not all registered teams are competing on May 12th.

Acton-Boxborough Regional High School	Reading Memorial High School
Bedford High School	Rockport High School
Boston College High School	Salem High School
Bristol County Agricultural High School	Somerset High School
Chelmsford High School	South Hadley High School
David Prouty High School	Southeastern Regional
Doherty Memorial High School	Sutton High School
Greater New Bedford Vo-Tech	Tabor Academy
Greenfield High School	Taconic High School
Groton-Dunstable High School	Tantasqua High School
Hoosac Valley High School	Weston High School/Land's Sake
Hopkinton High School	Worcester Technical High School
Lexington High School	
Lunenburg High School	
Millbury Jr. Sr. High School	
Monson Environmental Action Team	
Mount Everett Regional High School	
Newton North High School	
Nipmuc Regional High School	
Old Rochester Regional High School	
Oliver Ames High School	
Pioneer Valley Regional School	
Provincetown High School	
Quabbin Regional High School	
R.C.Mahar Regional High School	

Inside

Schedule	2
Steering Committee	2
Station Coordinators	2
What Happens at an Ecostation? ..	2
Meet Our Host Site	3
A Greener Envirothon	3
Roundtables	3
2011 Current Issue	4
Current Issue Presentation Judges ..	5
Volunteers	6
Site Map	7
Sponsors	8

Schedule

7:30	Registration for volunteers and judges Registration for teams <ul style="list-style-type: none"> Teams will be assigned to their stations and presentation tent number Coaches and alternates assigned schedule and presentation tent number
8:00	Orientation for volunteers and judges Team pictures
8:30 - 8:45	WELCOME and announcements
9:00 - 9:30	First station for teams Coaches begin rotation Alternates begin program.
9:40 - 10:10	Second station for teams Coaches continue rotation
10:20 - 10:50	Third station for teams Coaches continue rotation
11:00 - 11:30	Fourth station for teams Coaches continue rotation
11:40 - 12:10	Fifth station for teams Coaches continue rotation
12:15 - 2:00	LUNCH Explore test stations Team roundtable discussions Group photo Evaluations
2:00	Announcement of winners and Community Awards

Massachusetts Envirothon Steering Committee

Will Snyder	<i>Chair, Massachusetts Envirothon Committee</i> University of Massachusetts Extension
Susan Benoit	<i>Vice Chair, Massachusetts Envirothon Committee</i> Massachusetts Division of Fisheries and Wildlife (MassWildlife)
Liz McGuire	<i>Treasurer, Massachusetts Envirothon Committee</i> Middlesex Conservation District
Doris Wood	<i>Secretary, Massachusetts Envirothon Committee</i>
Brita Dempsey	<i>Massachusetts Envirothon Coordinator</i>
Tom Anderson	Massachusetts Executive Office of Energy and Environmental Affairs
Meg Colclough	Executive Office of Energy and Environmental Affairs
Fred Farmer	Massachusetts Association of Conservation Districts
Julie Martin	Massachusetts Department of Conservation and Recreation
Joe Perry	Massachusetts Department of Conservation and Recreation
Clif Read	Massachusetts Department of Conservation and Recreation
George Zoto	Massachusetts Department of Environmental Protection

Non-voting Steering Committee Members

Al Averill	USDA Natural Resources Conservation Service
Bill Dunham	Belmont Enterprises
Jim Lafley	Massachusetts Department of Conservation and Recreation
Donald Lambert	Hampden Conservation District
Pam Landry	Massachusetts Division of Fisheries and Wildlife (MassWildlife)
Dominique Pahlavan	Executive Office of Energy and Environmental Affairs
Diane Baedeker Petit	USDA Natural Resources Conservation Service

Station Coordinators/Curriculum Specialists

Al Averill	USDA Natural Resources Conservation Service
Jim Lafley	Massachusetts Department of Conservation and Recreation
Pam Landry	Massachusetts Division of Fisheries and Wildlife (MassWildlife)
Dominique Pahlavan	Executive Office of Energy and Environmental Affairs
Joe Perry	Massachusetts Department of Conservation and Recreation
Clif Read	Massachusetts Department of Conservation and Recreation
Will Snyder	University of Massachusetts Extension
George Zoto	Massachusetts Department of Environmental Protection


Find us on
Facebook
www.facebook.com/maenvirothon



What happens at an Ecostation?

At the Massachusetts Envirothon, teams rotate through four ecostations, in addition to giving their Current Issue presentation. Each ecostation has a different emphasis: forestry, soil, water and wildlife.

When students arrive at each ecostation, the examiners instruct them to get into their distinct teams. Teams listen to examiners for a brief time to become familiar with that station, its questions and any other special instructions.

It's then up to the team to determine their strategy in taking the exam. They can break up and use individual strengths (for example, one or two people focus on species ID, while the others do the written section), or go through the exam as a team.

The ecostations generally incorporate questions that are:

- **Written** - multiple choice, true or false, or fill-in-the-blank.
- **Practical** - This may include species identification, questions that relate to the soils or habitat surrounding the station, and hands-on activities.



Meet Our Host Site

Great Brook Farm State Park



A Jersey cow at Great Brook Farm

Agriculture has been part of Great Brook's history for centuries. Holsteins have been kept here for over 60 years and current farmer Mark Duffy continues the tradition with his Holstein and Jersey cows.

The farm and buildings at Great Brook Farm comprise a classic eastern Massachusetts agricultural landscape. The arrangement of open fields, sturdy walls, diversified woodlands and historic structures are significant images of our agricultural past.



An active dairy farm operates year-round and guided barn tours are available from May to October.

Amidst the beautiful scenery lie 20 miles of trails for hiking, bicycling and horseback riding. Notable Native American sites can be seen from these paths.

During the winter months, trail-grooming allows skiing enthusiasts to take part in cross-country skiing. Meadow Pond has a canoe launch and is ideal for fishing.

Native Americans used sections of Great Brook Farm as sacred sites. Seventeenth century cellar holes comprise "the city" where early English settlers worked one of numerous mill sites on the 1,000 acre park.

The ice cream stand is open through the month of October. For more information, visit www.mass.gov/dcr/parks/northeast/gbfm.htm ♦

A Greener Envirothon



The Massachusetts Envirothon is making every effort to have a very green competition.

We are serving minimally packaged food and beverages. Waste will be disposed of with as much recycling and composting as possible.

Students from Millbury Junior-Senior High School are helping in the recycling and sorting efforts.



Roundtables

When the testing is over, everyone is invited to unwind, meet new friends from across the state, and share community and environmental connections at the Roundtable discussions.

Roundtables are freewheeling, small-group discussions about a place, a question, or an idea of your choice.

Every team is invited to bring their presentation materials and start a conversation about what they have found in their communities. Community Award teams are especially encouraged to offer a roundtable.

Here's how it works:

- For each team that wants to offer a roundtable, two or three "home team" members share their team's topic with three or four visitors.
- The place buzzes with ideas, opinions, and concerns as each home team presents their topic and visitors offer their own questions and views.
- Every 5-10 minutes, visitors leave one table, move on to another, and the process begins again. Team members take turns sitting at the home table and visiting other tables.

EVERYONE is welcome to visit the roundtables!



Wetland Protection

Background

Wetlands perform critical ecosystem functions and provide important values to human society through their natural functions. Massachusetts was an early leader in providing legal protections for wetland functions and values.

The Massachusetts Wetland Protection Act (WPA) regulates work in and adjacent to wetland resource areas, and it vests the primary responsibility for enforcing the law in the municipality where the wetland is located. With very few exceptions, anyone wanting to do work in or near a wetland must obtain a permit from the local Conservation Commission, which sets out specific conditions for the project.

Under the WPA, individual municipalities are allowed to strengthen legal protections for wetlands within their boundaries. Many towns have done this through adoption of a local wetland protection bylaw.

Many of the open spaces we enjoy in our communities have remained in a natural state over the past 40 years because they are associated with wetlands and protected by the WPA.

The work of identifying and delineating and monitoring wetlands has produced new scientific understanding, and the requirement to protect wetlands during and after construction has led to green technology development.



The ecosystem services provided by wetlands have saved Massachusetts communities many dollars in flood control, water purification, and more.

At the same time, some view wetland regulations as interfering in the exercise of landowner property rights. Wetland regulations have sometimes been cited as the cause of unreasonable delays and obstacles to economic development. Prime areas in Massachusetts communities are often off limits to construction and subject to limits on recreational use because of wetland protection.

Laws are only one element of effective wetland protection. A scientifically literate citizenry, with strong environmental stewardship values and skills for effective action, is another.

The Problem

Teams have been asked to help their municipalities to evaluate wetland protection in their town.

- ✓ Are wetlands being adequately protected?
- ✓ Has the town been over-zealous, protecting wetlands at the expense of other important values?
- ✓ What is the town's responsibility to the next generation?
- ✓ Is this responsibility being exercised?
- ✓ What needs to be done with regard to wetlands to assure the brightest future for the community?

To make a strong case, teams must demonstrate a thorough knowledge of the wetlands of their communities, including the functions and values they provide for people and the ecosystem as a whole, and the threats to these functions and values, now and in the future.

Teams should be able to speak about the relative importance of individual wetlands, as well as about wetlands in general. They must also demonstrate understanding of the effectiveness of current protections, such as local bylaws, open space plans, volunteer and paid time devoted to wetland protection, and an environmentally literate citizenry, as well as differing opinions on wetland protection.

How it works

Teams make their presentations to a panel of about eight judges. The judge's job is to listen, ask good questions, assess the team's work, and give feedback on their research, their proposal, and their presentation.

Teams have 15 minutes for their presentation, followed by a 10-minute period when the judges can ask questions.

Five of the judges will give the team a number score, while the others focus on providing written comments. An average will be generated to give the team a score for the competition. ♦



Community Awards

Teams work hard to prepare for their Massachusetts Envirothon Current Issue presentations and they deserve recognition for this work!

The Community Awards are presented to teams who do thorough and wide-ranging Current Issue research and teams that take action in a service project based on what they learn.

The Community Awards provide important visibility for teams, schools and communities. These awards are optional and noncompetitive.

Current Issue Presentation Judges

Judges as of May 9, 2011



- **David Ahlfeld**, Ph.D., Professor, UMass Dept. of Civil and Environmental Engineering
- **Paul Barten**, Ph.D., Professor, UMass Dept. of Environmental Conservation
- **Linda Benevides**, Environmental Engineer, Exec. Office of Energy & Environmental Affairs
- **Kim Bent**, Environmental Educator, Catch The Science Bug
- **Matthew Burne**, Conservation Director, Walden Woods Project
- **Samantha Overton Bussell**, Deputy Director, Mass. Dept. of Conservation and Recreation, Division of Urban Parks
- **Calvin Chase**, President, Mass. State Grange
- **Peter Church**, South Region Director, Mass. Dept. of Conservation & Recreation
- **Neil Clark**, The Writing Company
- **Dan Clark**, Director, Natural Resources Section, Mass. Dept. of Conservation & Recreation
- **Christine Clarke**, State Conservationist, USDA Natural Resources Conservation Service
- **Marjorie Cooper**, Supervisor, Worcester County Conservation District
- **Stephanie Cooper**, Assist. Secretary for Land & Forest Conservation, Exec. Office of Energy & Environmental Affairs
- **Melissa Cryan**, Parkland Acquisitions and Renovations for Communities (PARC) Grant Coordinator, Exec. Office of Energy & Environmental Affairs
- **Lee Curtis**, Ecological Scientist, BSC Group, Inc.
- **Kathleen Davis**, Ph.D., Associate Professor, Science Education, UMass School of Education
- **Paula Davison**, Civil Engineer, Mass. Dept. of Conservation & Recreation, Division of Water Supply Protection
- **Jim DiMaio**, Forestry Chief, retired, Mass. Dept. of Conservation & Recreation
- **Maryann Dipinto**, Environmental Analyst, Mass. Dept. of Environmental Protection, Wetlands Protection
- **Christy Edwards**, Director of Capital Planning/Land Acquisition, Mass. Dept. of Fish & Game
- **Matthew Evans, Ph.D.**, Assist. Professor of Chemistry & Geology, Wheaton College, Dept. of Chemistry,
- **Linda Eyster**, President, Mass. Assoc. of Science Teachers
- **Nancy M. Eyster-Smith, Ph.D.**, Associate Professor, Bentley University, Dept. of Natural & Applied Sciences,
- **Jennifer Fish**, Director, Service Forestry Program, Mass. Dept. of Conservation & Recreation
- **Renée Fitsik**, Water Resources Engineer, Geosyntec Consultants, Inc.
- **Christy Foote-Smith**, Director, Drumlin Farm Wildlife Sanctuary, Mass. Audubon Society
- **Kurt Gaertner**, Director of Sustainable Development, Exec. Office of Energy & Environmental Affairs
- **Mike Gildesgame**, Policy Manager, Appalachian Mountain Club
- **Michele Girard**, Associate Director & Education Coordinator, Mass. Assoc. of Conservation Commissions

- **Mary Griffin**, Commissioner, Mass. Dept. of Fish & Game
- **Bruce Griffin**, Senior Scientist, New England Environmental, Inc.
- **Michele Grzenda**, Weston Conservation Agent, Mass. Assoc. of Conservation Commissions
- **William Harman**, Westford Conservation Trust
- **John Hayes**, Ph.D., Professor, Department of Geography, Salem State University
- **Jay Healy**, State Director, USDA Rural Development
- **Ellie Horwitz**, Chief of Information & Education, MassWildlife
- **Arthur Hughes III**, Legal Counsel, Exec. Office of Energy & Environmental Affairs
- **Gerard Kennedy**, Director, Division of Agricultural Technical Assistance, Mass. Dept. of Agricultural Resources
- **Barbara Kickham**, Mass. Dept. of Environmental Protection, Central Reg. Office
- **Kenneth Kimmel**, Commissioner, Mass. Dept. of Environmental Protection
- **Edward M. Lambert, Jr.**, Commissioner, Mass. Dept. of Conservation & Recreation
- **Andrea Langhauser**, Senior Planner, Mass. Dept. of Environmental Protection, Waterways Regulation Program
- **Marion Larson**, Information & Education Biologist, MassWildlife
- **Joseph Larson, Ph.D.**, Professor, retired, The Environmental Institute, UMass
- **Don Lewis**, Exec. Director, Mass. Assoc. of Conservation Districts
- **Paul Lyons**, Environmental Analyst, Mass. Dept. of Conservation and Recreation, Division of Water Supply Protection
- **Robert McCollum**, Environmental Analyst, Mass. Dept. of Environmental Protection - Wetlands & Waterways
- **Gregor McGregor, Esq.**, Attorney, McGregor & Associates
- **Ray McKinnon**, Ranger, Mass. Dept. of Conservation & Recreation - Blue Hills Reservation
- **Carl Melberg**, Refuge Planner, U.S. Fish and Wildlife Service, Eastern Mass. NWR Complex

- **Pam Merrill**, Northeast Reg. Circuit Rider, Mass. Dept. of Environmental Protection, Wetlands Program
- **Terry Miller**, Field Representative, USDA Forest Service, State & Private Forestry
- **Bill Moulton**, Engineering Supervisor, Mass. Dept. of Conservation & Recreation, Div. of Water Supply Protection
- **Joan Muller**, Education Coordinator, Waquoit Bay National Estuarine Research Reserve
- **Robert O'Connor**, Director of Land & Forest Policy, Exec. Office of Energy & Environmental Affairs
- **Gerry Palano**, Renewable Energy Coordinator, Mass. Dept. of Agricultural Resources
- **Melissa Patterson**, Conservation Service Manager, Student Conservation Association, Mass.
- **Jane Pfister**, GIS Coordinator, Exec. Office of Energy & Environmental Affairs
- **Anne Phelps**, Senior Environmental Planner, City of Newton
- **Theresa Portante-Lyle**, Wetland Scientist
- **Bill Pula**, Reg. Director, Mass. Dept. of Conservation and Recreation
- **Vandana Rao**, Assist. Director for Water Policy, Exec. Office of Energy & Environmental Affairs
- **Heidi Ricci**, Senior Policy Analyst, Mass. Audubon Society
- **Celia Riechel**, Grant Program Coordinator, Exec. Office of Energy & Environmental Affairs
- **Mary Rimmer**, Rimmer Environmental Consulting, LLC
- **Rob Rizzo**, Bioenergy Program Manager, Mass. Dept. of Energy Resources
- **Alice Rojko**, Environmental Analyst, Mass. Dept. of Environmental Protection
- **Brian Shanahan**, Reg. Director, Southeast Mass. Division of State Parks & Recreation
- **Joseph Shoenfeld**, Director, Communications & Marketing, UMass Center for Agriculture, College of Natural Sciences
- **Debbie Shriver**, Project Manager, Mass. Watershed Coalition
- **Erin Snook**, Community Outreach Coordinator, Sudbury Valley Trustees
- **Scott Soares**, Commissioner, Mass. Dept. of Agricultural Resources
- **Marcia Starkey**, Tower Hill Consultants
- **Jennifer Steel**, Board member, Mass. Assoc. of Conservation Commissions
- **Rick Sullivan**, Secretary, Exec. Office of Energy & Environmental Affairs
- **Mary Trudeau**, Wetland Scientist
- **Magdalena Vinson**, Stonewall Farm
- **Russ Waldron**, Applied Ecological Sciences
- **Tom Waskiewicz**, Extension Educator, UMass Extension
- **Sally Zielinski**, Ph.D., Mass. Assoc. of Conservation Commissions
- **Joel Zimmerman**, Reg. Planner, Mass. Dept. of Conservation and Recreation, Division of Water Supply Protection

Volunteers

- **Alyssa Anderson**, Exec. Office of Energy and Environmental Affairs
- **Zach Anderson**, Exec. Office of Energy and Environmental Affairs
- **Kim Bent**, The Science Bug
- **Joan Boegel**, Genzyme Corporation
- **Lois Breault-Melican**, Mass. Dept. of Conservation & Recreation
- **Barbara Buls**, Mass. Dept. of Conservation & Recreation
- **Debbie Cary**, Mass. Audubon Society, Broad Meadow Brook Sanctuary
- **John Clement**
- **Susan Cox**, USDA Forest Service
- **Nina Danforth**, The Grazing Project
- **Loryn Dion**, USDA Natural Resources Conservation Service Intern
- **Laura Dooley**, Mass. Dept. of Conservation & Recreation
- **Mike Downey**, Mass. Dept. of Conservation & Recreation
- **Maryse Fenton**, Mass. Dept. of Conservation & Recreation
- **Shawn Finn**, USDA Natural Resources Conservation Service
- **Alynda Foreman**, The Louis Berger Group, Inc.
- **Norma Forgione**, Mass. Dept. of Conservation & Recreation
- **Kelley Freda**, Mass. Dept. of Conservation & Recreation
- **Nancy Garrabrants**, UMass Extension
- **Alec Gillman**, Mass. Dept. of Conservation & Recreation
- **Justin Gonsor**, Mass. Dept. of Conservation & Recreation
- **Paul Gregory**, Mass. Dept. of Conservation & Recreation
- **Terry Hamilton**, Millbury Memorial High School
- **Lynn Hildenbrand**, Mass. Dept. of Conservation & Recreation
- **Amy Hoffmaster**, Mass. Envir. Edu. Society (MEES)
- **Bob Horton**, Mass. Dept. of Conservation & Recreation
- **Jack Jackson**, Mass. Dept. of Conservation & Recreation
- **Danielle Johnson**, Mass. Dept. of Conservation & Recreation



- **Melanie Joy**, Mass. Dept. of Conservation & Recreation
- **Guy LaChance**, Mass. Dept. of Conservation & Recreation
- **Jim Lagacy**, Mass Wildlife
- **Rick LeBlanc**, Mass. Dept. of Agricultural Resources
- **Austin Mason**
- **Peter Mirick**, Mass Wildlife
- **Laura Muller**, Wheaton College
- **Kitsy Newburg**
- **Kizette Ortiz-Vanger**, U.S. Fish & Wildlife Service, Assabet River NWR
- **Paula Packard**, Mass. Dept. of Conservation & Recreation
- **Michele Padula**, Mass. Dept. of Agricultural Resources
- **Chuck Perna**, Mass. Dept. of Conservation & Recreation
- **Tiara Perry**
- **Marianne Piche**, Mass Wildlife
- **Tim Rayworth**, Mass. Dept. of Conservation & Recreation
- **Judy Reilly**, Millbury Alumnae Parent
- **Tina Saunders**, Mass Water Resources Authority
- **Jennifer Schafer**, Mass. Dept. of Conservation & Recreation
- **Bob Schrader**, UMass Extension
- **Mulunesh (Mulu) Si-Say**, Mass. Dept. of Conservation & Recreation
- **Jess Skinner**,
- **Joe Smith**, Trust to Conserve New England Forests
- **Jennifer Soper**, Mass. Dept. of Conservation & Recreation
- **Val Stegemoen**, Mass. Dept. of Conservation & Recreation
- **Carol Szocik**, Mass. Dept. of Agricultural Resources

- **Alexis Tomaszewski**, Doherty Memorial HS Alumna
- **Gini Traub**, Mass. Dept. of Conservation & Recreation
- **Catherine Ulitsky**, USDA Natural Resources Conservation Service
- **Rich Valcourt Jr.**
- **Rich Valcourt Sr.**
- **Donald Watt**, Mass. Dept. of Conservation & Recreation
- **Kristina Wiley**, US DANatural Resources Conservation Service
- **David Williams**, Middlesex Conservation District
- **Amy Wilmot**, Mass. Dept. of Conservation & Recreation
- **Jan Wright**, Friends of Assabet River National Wildlife Refuge



Student Volunteers

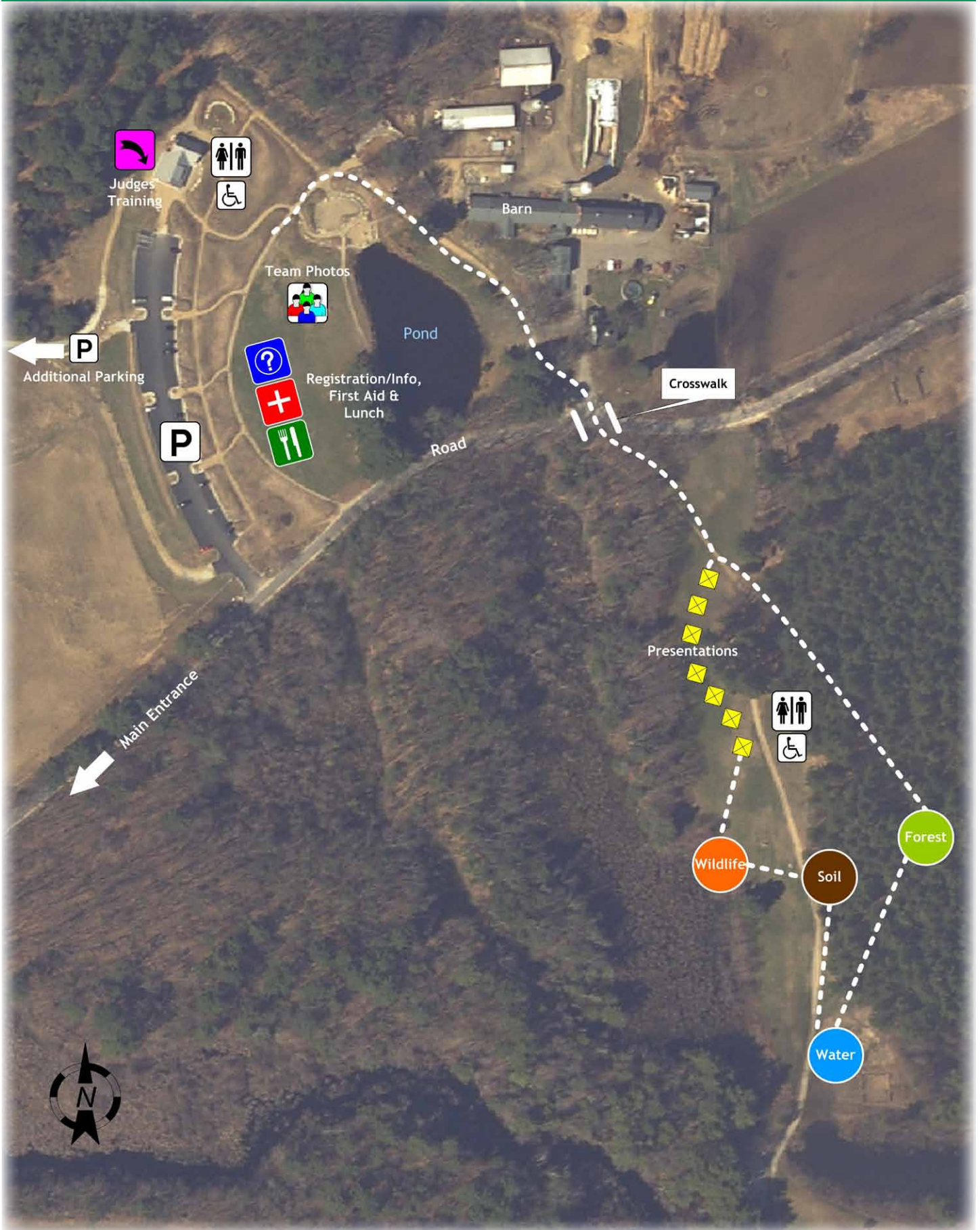
Millbury Junior/Senior High School

- | | |
|---------------------|----------------------|
| • Megan Andresano | • Sam Lussier |
| • Rebecca Audette | • Hannah Lynch |
| • Emma Barry | • Allie Machacz |
| • Taylor Bennett | • Julia Maynard |
| • Tiana Benton | • Lisa McLaren |
| • Sarah Bishop | • Sam Meserve |
| • Tim Born | • Ben Miles |
| • Nicole Chionchio | • Tory Miles |
| • Haley Dwinell | • Sarah Morse |
| • Taylor Garnes | • Allison Murray |
| • Julie Generelli | • Alex Peterson |
| • Sam Goyette | • Victoria Prominski |
| • Khanh Khanh Huynh | • Lani Riley |
| • Courtney Keddy | • Courtney Schultz |
| • Rachel Kelosis | • Nicky Stafinski |
| • Shannon Latour | • Caryna Wright |



Did you know?
 When the Envirothon program started in 1979 in Pennsylvania it was known as the Environmental Olympics. In 1988 the name was changed to the Envirothon.

Site Map | Great Brook Farm State Park



Thank you to our sponsors!

Great Brook Farm State Park

Host of the 2011 Massachusetts Envirothon

Jennifer Stowe, Northeast Regional Ranger

Steve Carlin, Park Supervisor

and thanks to the entire Great Brook Farm State Park staff

The Massachusetts Envirothon is a program of the
Massachusetts State Commission for Conservation of Soil, Water and Related Resources.

Our work would not be possible without contributions of
time, resources and funding from a variety of donors.

Berkshire Conservation District

Cape Cod Conservation District

Environmental Business Council of New England

Greater New Bedford Regional Vocational-Technical High School

Green Mountain Coffee

Hannaford Supermarkets

Massachusetts Association of Conservation Districts

Massachusetts Department of Conservation and Recreation

Massachusetts Department of Environmental Protection

Massachusetts Division of Fisheries and Wildlife (MassWildlife)

Massachusetts Executive Office of Energy and Environmental Affairs

Middlesex Conservation District

Museum of Science, Boston

New England Apple Association

New England Aquarium

Shaw's Supermarkets

Sholan Farms

Society of Soil Scientists of Southern New England

Southern New England Chapter of Soil & Water Conservation Society

U.S. Forest Service/Massachusetts Department of Conservation and Recreation

University of Massachusetts, Amherst, College of Natural Sciences

University of Massachusetts, Dartmouth, Office of Sustainability

University of Massachusetts Extension

USDA Natural Resources Conservation Service

Westford Conservation Trust

Wheaton College

Worcester County Conservation District

A special thank you to the committee, judges, volunteers, coaches,
agencies, organizations, schools, parents and all whose hard work and support make
the Massachusetts Envirothon possible!